

Enjoy the luxury living at Lowjee !



S. No. 31, H. No. - 2, Plot No. 8, 9, 11 & 12, CTS No. 1093, Chinchavali, Khopoli.

Amenities

- 2'X2' Vitrified flooring tiles of branded make for hall, bedroom and kitchen.
- Anti skid ceramic tiles flooring of size 1'x1' for bathroom and W.C.
- Colour glazed tiles in toilets and bathroom upto 7' and 4' W.C.
- Granite kitchen platform with stainless steel sink with one tap and 3' tiles dado around it.
- Concealed copper wiring with Modular switches.
- Concealed plumbing with C.P. fittings.
- Decorated entrance lobby.
- Compound paving with checkered tiles.
- Concealed T.V. / Telephone points in Living room.
- Powder coated aluminum sliding windows.
- Stilt & open car parking space.
- External water proof cement paint and
- Internal acrylic distemper.
- Decorative main door shutter with modern accessories / fittings
- Standard make lift.
- Marble door frame with powder coated aluminum frame and backlite sheet door for bathroom and W.C.
- 24 hour power backup system for lift and common light.



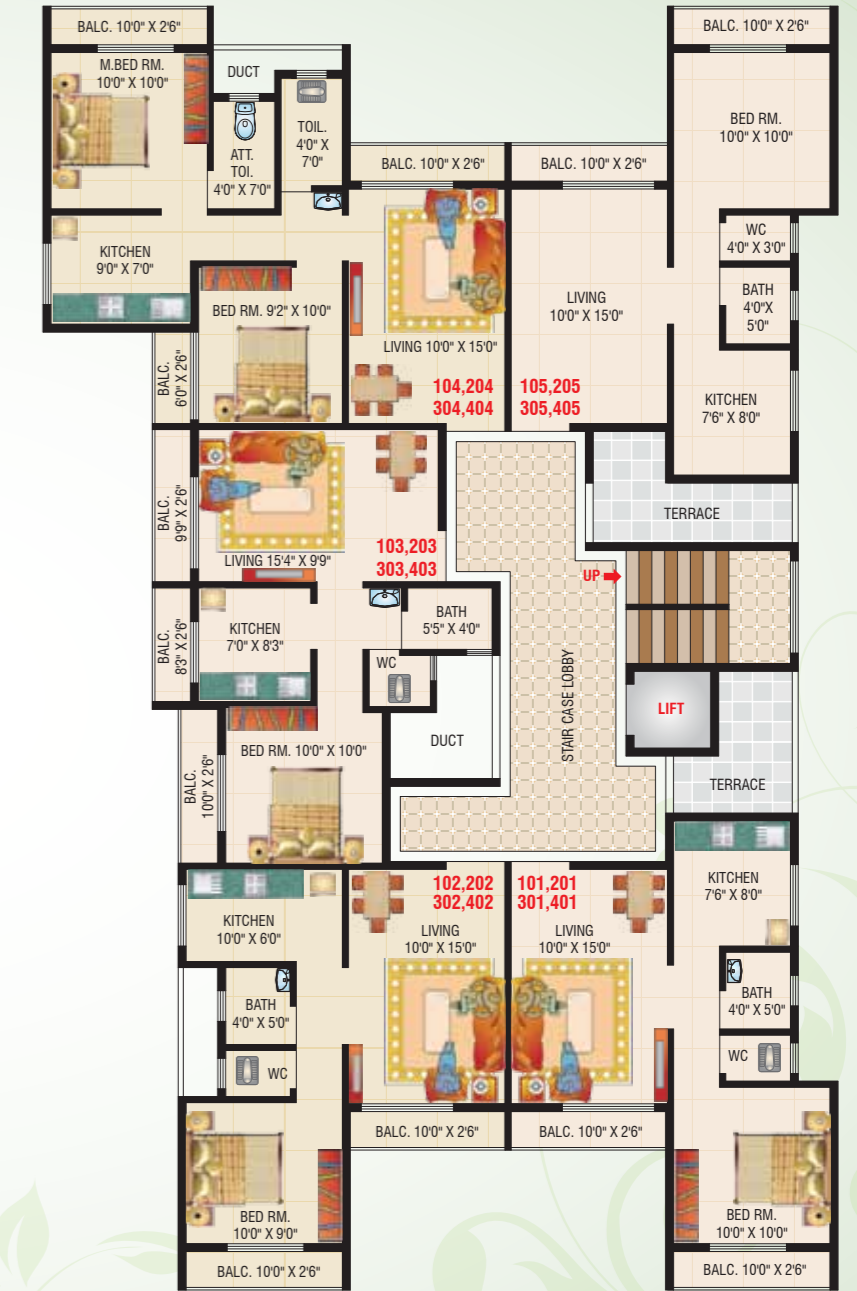
S. No. 31, H. No. - 2, Plot No. 8, 9, 11 & 12, CTS No. 1093, Chinchavali, Khopoli.



LAYOUT PLAN



GROUND FLOOR PLAN
A - WING



1ST TO 4TH TYPICAL FLOOR PLAN
A - WING



**GROUND FLOOR PLAN
B - WING**



**1ST TO 4TH TYPICAL FLOOR PLAN
B - WING**



**5TH FLOOR PLAN
B - WING**

Distance from site



RAILWAY STATION - 0.0 KM



LONAVALA - 10 KM

PROPOSED AIRPORT - 30 KM



PUNE - 75 KM

ST STAND - 1.5 KM

MUMBAI - 65 KM



NH-4 1.0 KM

KARJAT - 10 KM



GAGANGIRI MAHARAJ MATH

KHOPOLI - 1.5 KM



ZENITH WATER FALL

KHOPOLI - 01 KM



S. No. 31, H. No. - 2, Plot No. 8, 9, 11 & 12,
CTS No. 1093, Chinchavali, Khopoli.



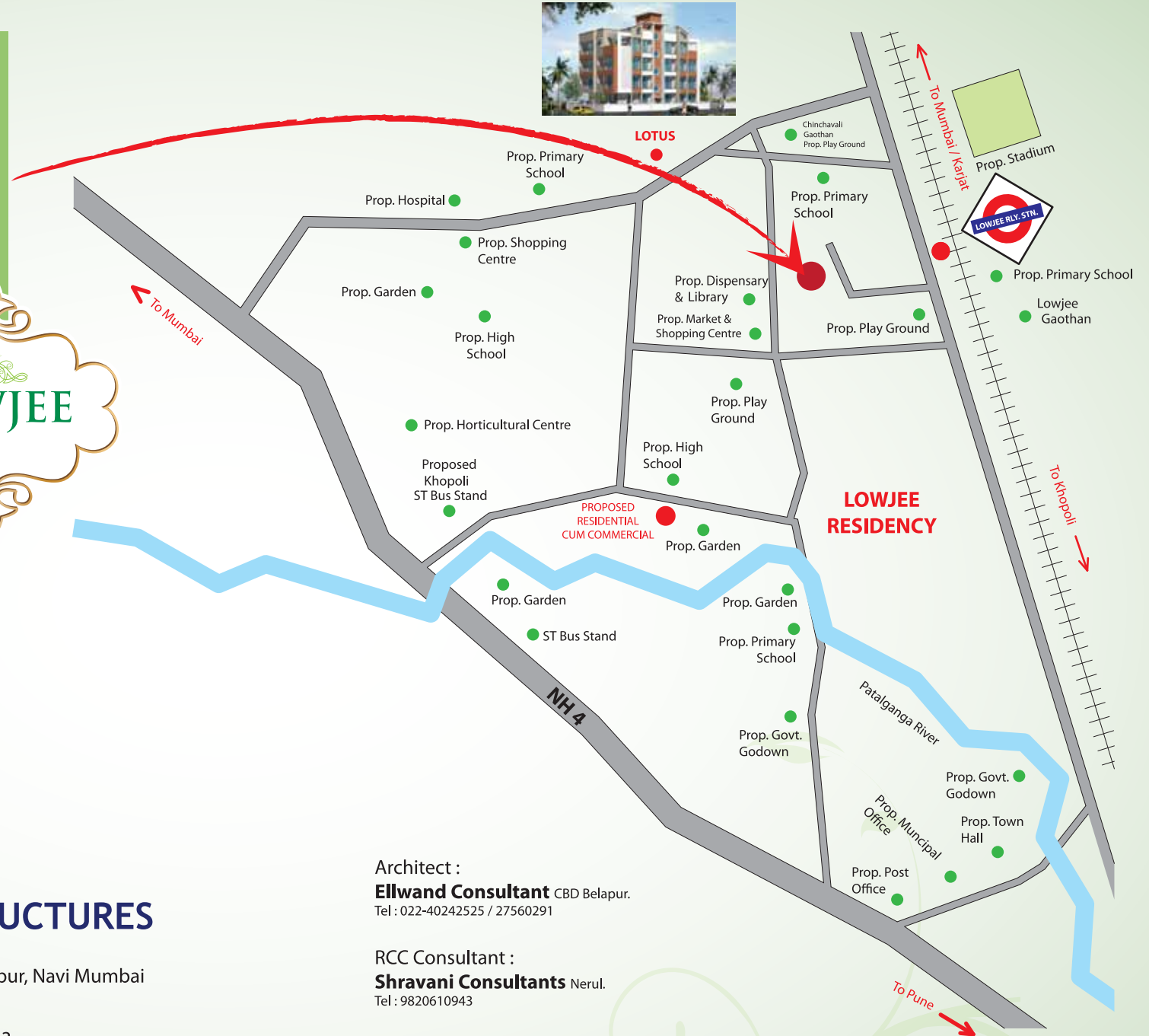
LEENA DEVELOPERS & INFRASTRUCTURES

Regd. Office : Shop No. 21, Shopping Centre, Sector-9, C.B.D. Belapur, Navi Mumbai
Tel.: 022-2758 0185 • Email : leenadevelopers1@gmail.com

Site Office : Ganesh Krupa, Shop No. 1 & 3, Survey No. 40, Plot No. 3
Opp. Lowjee Rly. Stn., Khopoli.

Contact for Booking : 95945 32221 / 90290 07029

Web: www.leenadevelopers.com



Architect :
Ellwand Consultant CBD Belapur.
Tel : 022-40242525 / 27560291

RCC Consultant :
Shravani Consultants Nerul.
Tel : 9820610943

Legal Advisor :
Advocate Vasant Namjoshi Khopoli.
Tel : 08308099972

Notes : The content of this Brochure are purely conceptual and have no legal binding on us. Developers reserve the rights to amend the layout plans, number of flats, elevation, colour scheme, specifications and other amenities.