

Lotus

Survey No. 69 + 70, Sub Plot No - 6, C.T.S No. - 1145 / 1148, At Chinchawali, Khopoli

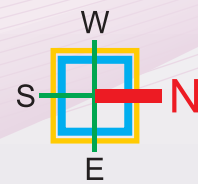


Amenities

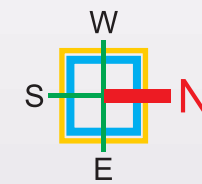
- 2'X2' Vitrified flooring tiles of branded make for hall, bedroom and kitchen.
- Anti skid ceramic tiles flooring of size 1'x1' for bathroom and W.C.
- Colour glazed tiles in toilets and bathroom upto 7' and 4'W.C.
- Granite kitchen platform with stainless steel sink with one tap and 3' tiles dado around it.
- Concealed copper wiring with Modular switches.
- Concealed plumbing with C.P. fittings.
- Decorated entrance lobby.
- Compound paving with checkered tiles.
- Concealed T.V. / Telephone points in Living room.
- Powder coated aluminum sliding windows.
- Stilt & open car parking space.
- External water proof cement paint and
- Internal acrylic distemper.
- Decorative main door shutter with modern accessories / fittings
- Marble door frame with powder coated aluminum frame and backlite sheet door for bathroom and W.C.



9.0 M. WIDE ROAD
GROUND FLOOR PLAN



9.0 M. WIDE ROAD
1ST & 2ND FLOOR PLAN



9.0 M. WIDE ROAD
3RD FLOOR PLAN

Distance from site :



RAILWAY STATION - 0.5 KM



LONAVALA - 10 KM

PROPOSED AIRPORT - 30 KM



PUNE - 75 KM

ST STAND - 1.5 KM



MUMBAI - 65 KM

NH-4 1.0 KM

KARJAT - 10 KM



LEENA DEVELOPERS & INFRASTRUCTURES

Regd. Office : Shop No. 21, Shopping Centre, Sector-9, C.B.D. Belapur, Navi Mumbai
Tel.: 022-2758 0185 • Email : leenadevelopers@gmail.com

Site Office : Ganesh Krupa, Shop No. 1 & 3, Survey No. 40, Plot No. 3
Opp. Lowjee Rly. Stn., Khopoli.

Contact for Booking : 95945 32221 / 90290 07029



Architect :

Ellwand Consultants Pvt. Ltd. CBD Belapur.
Tel : 022-40242525 / 27560291

RCC Consultant :

Shravani Consultants Nerul.
Tel : 9820610943

Legal Advisor :

Advocate Vasant Namjoshi Khopoli.
Tel : 08308099972

Notes : The content of this Brochure are purely conceptual and have no legal binding on us. Developers reserve the rights to amend the layout plans, number of flats, elevation, colour scheme, specifications and other amenities.